

N-Tron 9000 Series Firmware Upgrade Procedure

TFTP Method:

Please refer to the user's guide found the ProductCD or on-line at:
http://www.n-tron.com/pdf/9000series_manual.pdf

Note: Although the download speed may be quicker, this method requires third party TFTP server software to be installed on a PC connected to the LAN. When updating a few units, you may find it quicker to simply use the Serial Port method listed below.

Serial/COM Port method:

Save the included 9000 Series Flash Image file to a local drive location such as c:\

Log in to the switch using HyperTerminal and use a straight through serial cable.
(115200, 8, N, 1, No Flow Control)

Hit <ENTER> to login [Enter]

Allowing Serial Session

```
Product Name           : N-TRON 9000 Series
Product Software Version : x.x.x
Product BOOT ROM Version : LOADER1.20
Product Build Date      : Jun 20 2007 at 15:50:40
Product Copyright       : N-TRON Corp.
Product URL             : http://www.n-tron.com
```

N-TRON Managed Switch

login: admin [Enter]

Password: admin [Enter]

N-TRON/Admin#[1]> image [Enter]

N-TRON/Admin#[2]image> download [Enter]

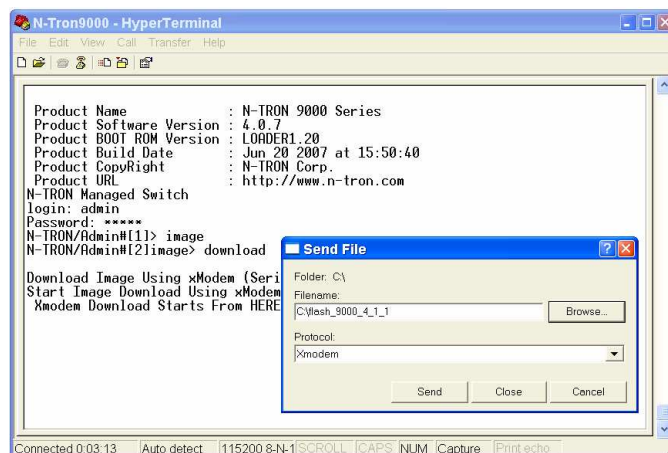
Download Image Using xModem (Serial Download) [y/n] y [Enter]

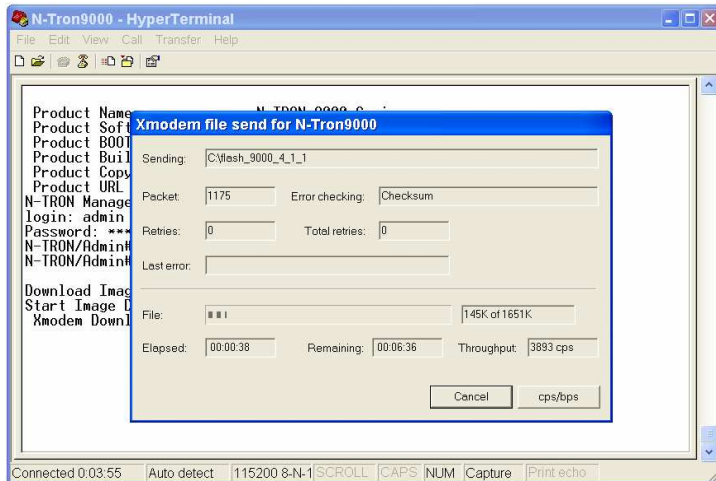
Start Image Download Using xModem

xModem Download Starts From HERE.

Now, from the Transfer Pull down menu in Hyper terminal select --> Send File... --> Browse to select saved flash file --> Set Transfer to xModem --> Send Button as shown to the right:

Once you have selected the file location and xModem protocol, you must click the Send button with your mouse to begin downloading the image to the switch.





Checking the Image length and verifying checksum

Checksum Satisfied, Saving image to flash..

Downloaded Image Size:[1690568] Bytes

May take a few Minutes.....

Do you Want to Restart the System Now: [y/n] y [Enter]

Do you Want to Save the Configuration: [y/n] n [Enter]

Device is Going for Reboot....

Once unit has rebooted, manually cycle the power on the 9000 and verify the update has been processed.

Hit <ENTER> to login [Enter]

Allowing Serial Session

```
Product Name           : N-TRON 9000 Series
Product Software Version : x.x.x
Product BOOT ROM Version : LOADER1.20
Product Build Date      : Jun 20 2007 at 15:50:40
Product Copyright       : N-TRON Corp.
Product URL             : http://www.n-tron.com
```

N-TRON Managed Switch

login: admin [Enter]

Password: admin [Enter]

N-TRON/Admin#[1]> config erase [Enter]

Load Factory Default Setting? [y/n] y [Enter]

Keep Slots, IP, SubNet and Gateway Addresses? [y/n] n [Enter]

Factory Default Configuration Successfully loaded

Restart the switch to effect this change

N-TRON/Admin#[2]config> (manually cycle power of switch)

Re-Configure the IP Address and Subnet Mask of the 9000 in CLI

Note: The factory default IP Configuration of this switch is:

IP: 192.168.1.201
Subnet Mask: 255.255.255.0
Gateway: 192.168.1.1

Hit <ENTER> to login [Enter]

Allowing Serial Session

Product Name	: N-TRON 9000 Series
Product Software Version	: x.x.x
Product BOOT ROM Version	: LOADER1.20
Product Build Date	: Jun 20 2007 at 15:50:40
Product Copyright	: N-TRON Corp.
Product URL	: http://www.n-tron.com

N-TRON Managed Switch

login: admin [Enter]

Password: admin [Enter]

N-TRON/Admin#[1]> system [Enter]

N-TRON/Admin#[2]system> set [Enter]

N-TRON/Admin#[3]system/set> ip 192.168.1.210 255.255.255.0 [Enter] ← (for example)

The IP Address has been changed to : 192.168.1.133

The Subnet Mask has been changed to : 255.255.255.0

Do you Want to Restart the System Now: [y/n] y [Enter]

Do you Want to Save the Configuration: [y/n] y [Enter]

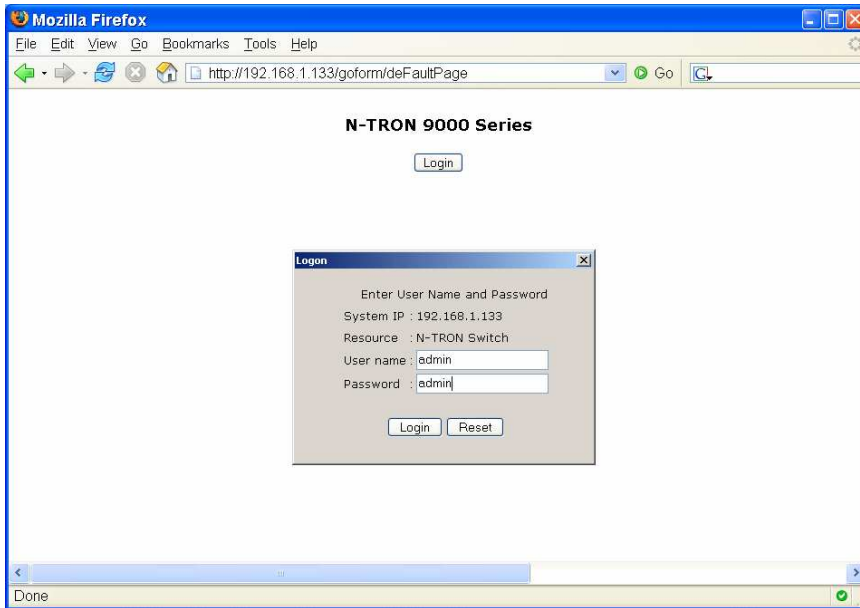
.....

.....

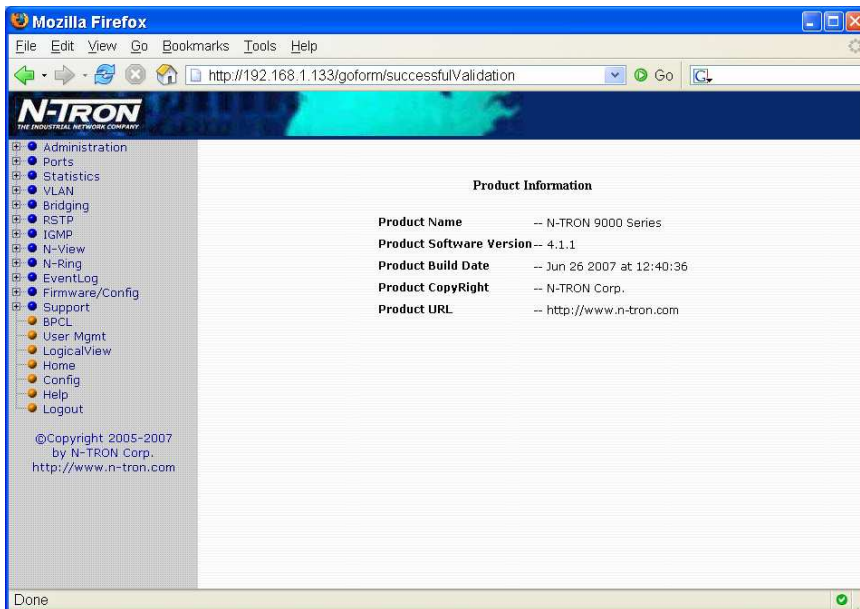
Device is Going for Reboot....

Manually re-configure the Slots of the 9000 from the web browser

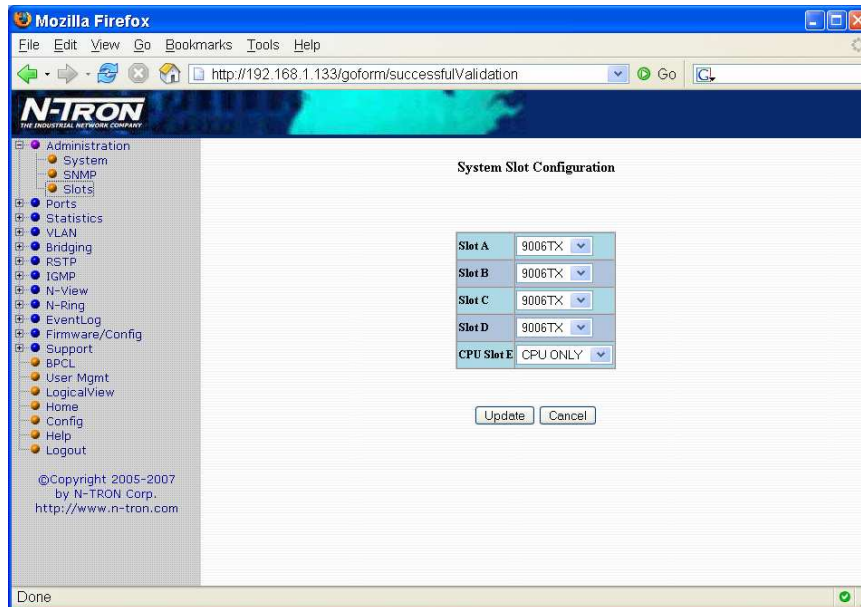
Launch your web browser and enter the assigned IP Address and login to the switch.



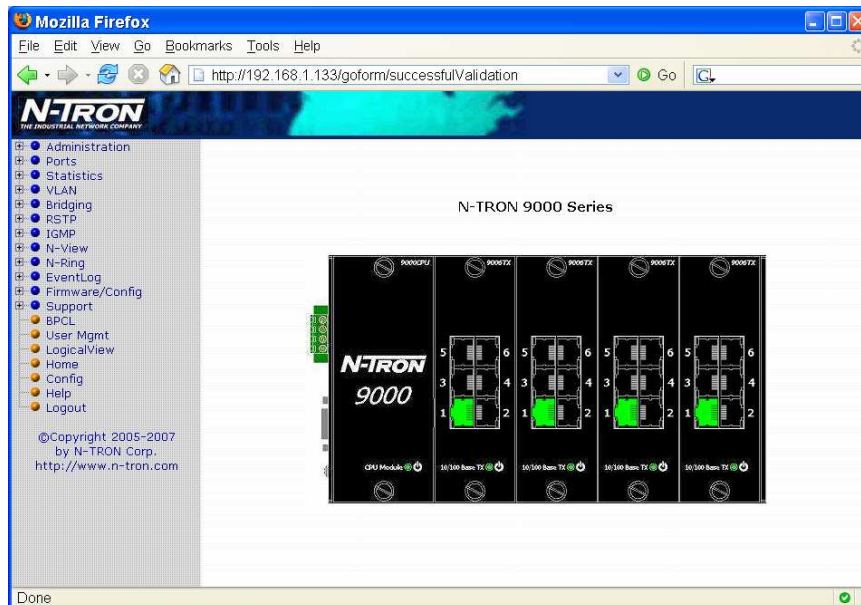
Verify the Software Revision at the main menu when presented.



Browse to the Slots submenu found under the Administration menu and configure modules for each slot respectively. Then, click the update button.



To verify the configuration has been saved, allow the switch to reboot and log back in to the web browser interface and compare the Logical View with the physical switch to confirm the settings were saved correctly.



This completes the firmware upgrade process.